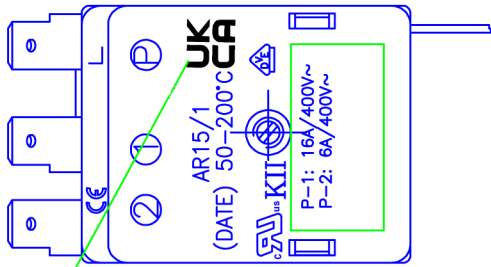


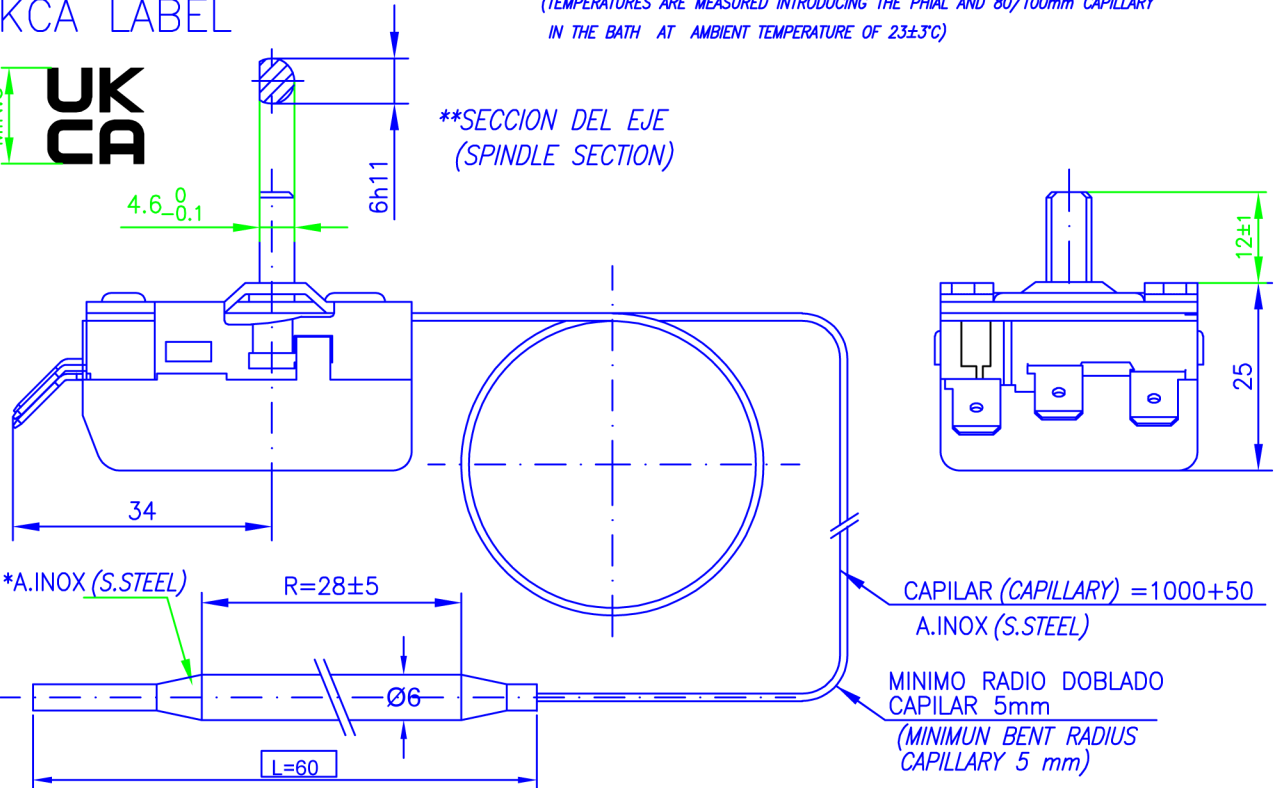
F-20201



NOTAS (NOTES):

- 1- DIFERENCIA DE CONEXION APROXIMADA (CONNECTION DIFFERENCE APPROXIMATELY) $6^{\circ}\text{C}\pm 3^{\circ}\text{C}$
- 2- MAXIMA TEMPERATURA DEL CUERPO (MAXIMUM BODY TEMPERATURE) VDE 125°C
- 3- CAPACIDAD DE MANIOBRA (POWER SUPPLY) P1:16A/400V~ P2:6A/400V~
- 4- LIMITES DE TEMPERATURA EN EL BULBO (TEMPERATURE LIMITS ON THE PHIAL) $-10 \div 320^{\circ}\text{C}$
- 5- LAS TEMPERATURAS INDICADAS SON VALORES DE DESCONEXION (P-1) (THE INDICATED TEMPERATURES ARE DISCONNECTION VALUES)
- 6- EJE DIBUJADO EN POSICION "0" (SPINDLE DRAW IN "0" POSITION)
- 7- FASTON 6,3 x 0,8 DIN 46244
- 8- LAS TEMPERATURAS SON MEDIDAS INTRODUCIENDO EL BULBO Y 80/100mm DE CAPILAR EN EL BAÑO A TEMPERATURA AMBIENTE DE $23\pm 3^{\circ}\text{C}$ (TEMPERATURES ARE MEASURED INTRODUCING THE PHIAL AND 80/100mm CAPILLARY IN THE BATH AT AMBIENT TEMPERATURE OF $23\pm 3^{\circ}\text{C}$)

UKCA LABEL



MAX. LONG. DEL TORNILLO 4 mm
 MAS ESP. CHAPA
 MAX.SCREW LENGHT 4mm PLUS
 PLATE THICKNESS

LONG. DEL TORNILLO SERA DE 6 mm MAS EL ESPESOR DE LA CHAPA
 (IN THESE HOLES ,THE MAX. SCREW LENGHT WILL BE 6mm PLUS PLATE THICKNESS)
 6mm PLUS PLATE

CIRCUITO ELECTRICO POSICION DE DESCONEXION (ELECTRIC DIAGRAM) (OPEN POSITION)

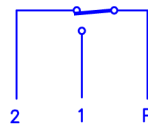
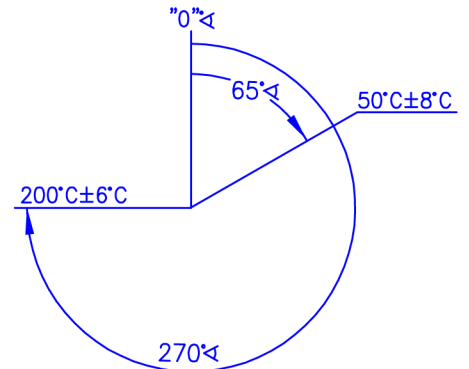


DIAGRAMA DE TEMPERATURAS (TEMPERATURE DIAGRAM)



* 0,004 ** N-40863/5 (1,10)

	Toler. general UNE/EN 22768 "m"	DIBUJADO	REVISADO	FECHA	AR15/1
	General tolerance UNE/EN 22768 "m"	DRAWN	APPROVED	DATE	
EDICION	EDITION	Ç.K.	V.B.C.	14/03/2023	
EDICIONES	EDITIONS				
ESCALAS	SCALE	TERMOSTATO (THERMOSTAT)			Ref. Cliente: AR15/1 Customer reference:
1:1					Sustituye a: A: Replacing: